



Customer  
Conference

**Better Together – Integrating Power BI,  
Power Apps, and Power Automate**

# Today's Presenter



**Savannah Dill**

Power Platform Consultant

+1 574-367-4730

[sdill@innovia.com](mailto:sdill@innovia.com)

Customer  
Conference

# The Microsoft Power Platform



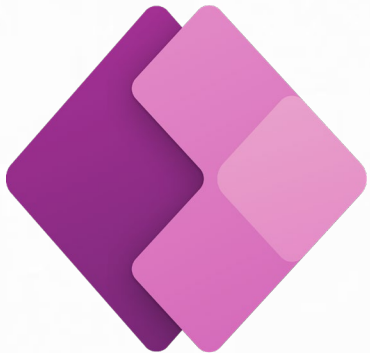
## Power BI

- Business Analytics



## Power Automate

- Low-Code Automation



## Power Apps

- Low-Code Apps



## Power Virtual Agents

- Self-Service Chat Agents

# Microsoft Power Platform

The low-code platform that spans Office 365, Azure, Dynamics 365, and standalone applications

**Innovation anywhere. Unlocks value everywhere.**



**Power BI**

Business analytics



**Power Apps**

Application development



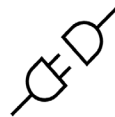
**Power Automate**

Process automation



**Power Virtual Agents**

Intelligent virtual agents



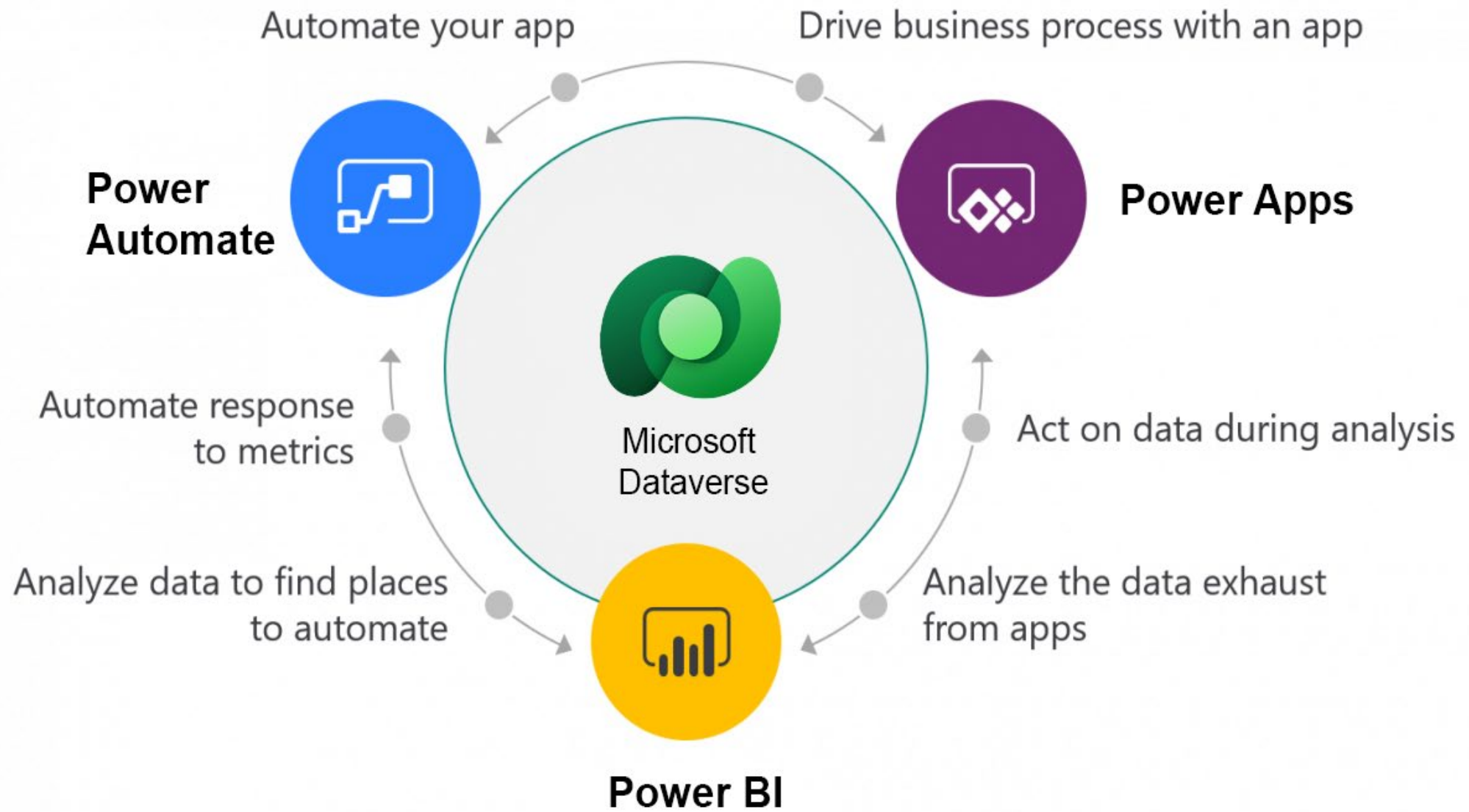
**Data  
connectors**



**AI Builder**



**Dataverse**



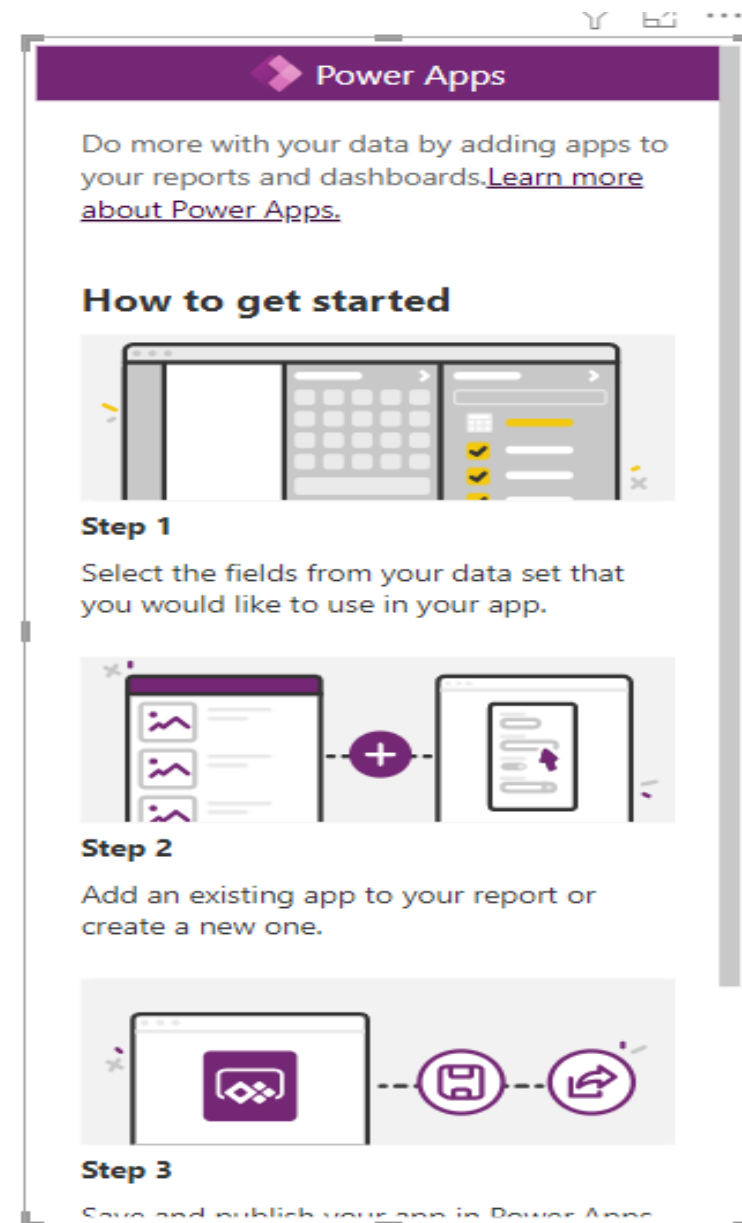
# Power Apps + Power BI

How it Works + Demo



# How it Works

- ✓ Add Power Apps Custom Visual to Power BI Report
- ✓ Define Fields from your Dataset to pass between Power BI and Power Apps
- ✓ Power Apps will run within the context of Power BI (Including Data Filtering)



# Power BI + Power Automate

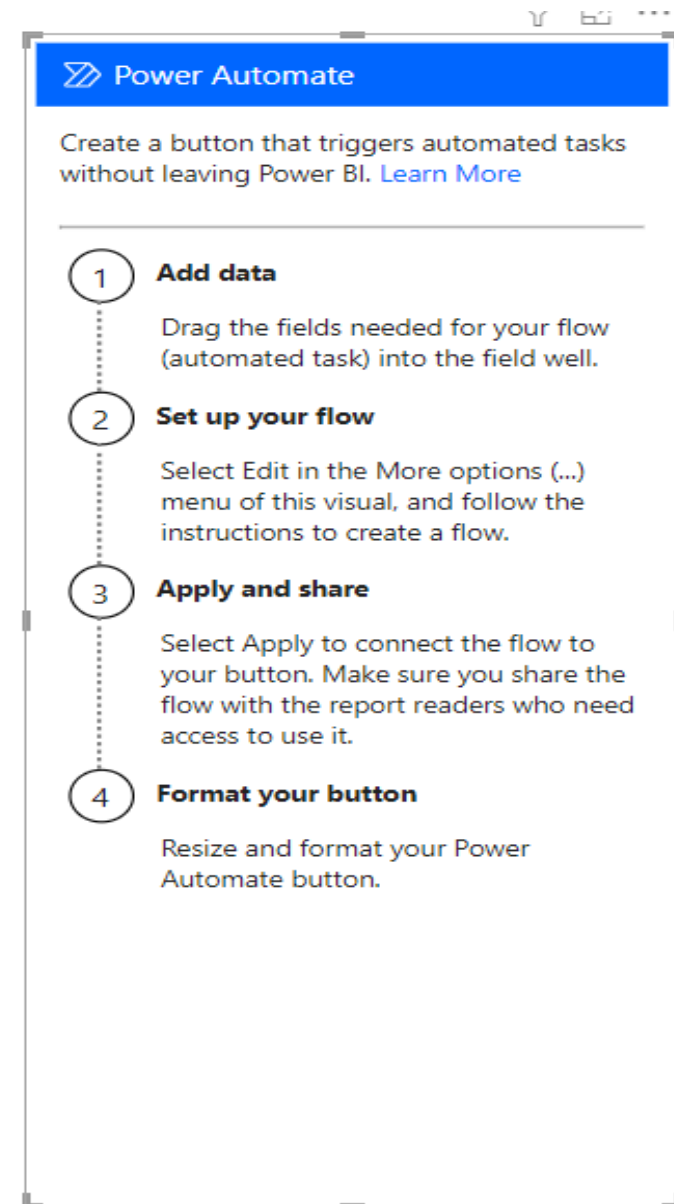
How it Works + Demo





# How it Works

- ✓ Add Power Automate Custom Visual to Power BI Report
- ✓ Set Up your Flow
- ✓ Add and format button within Power BI



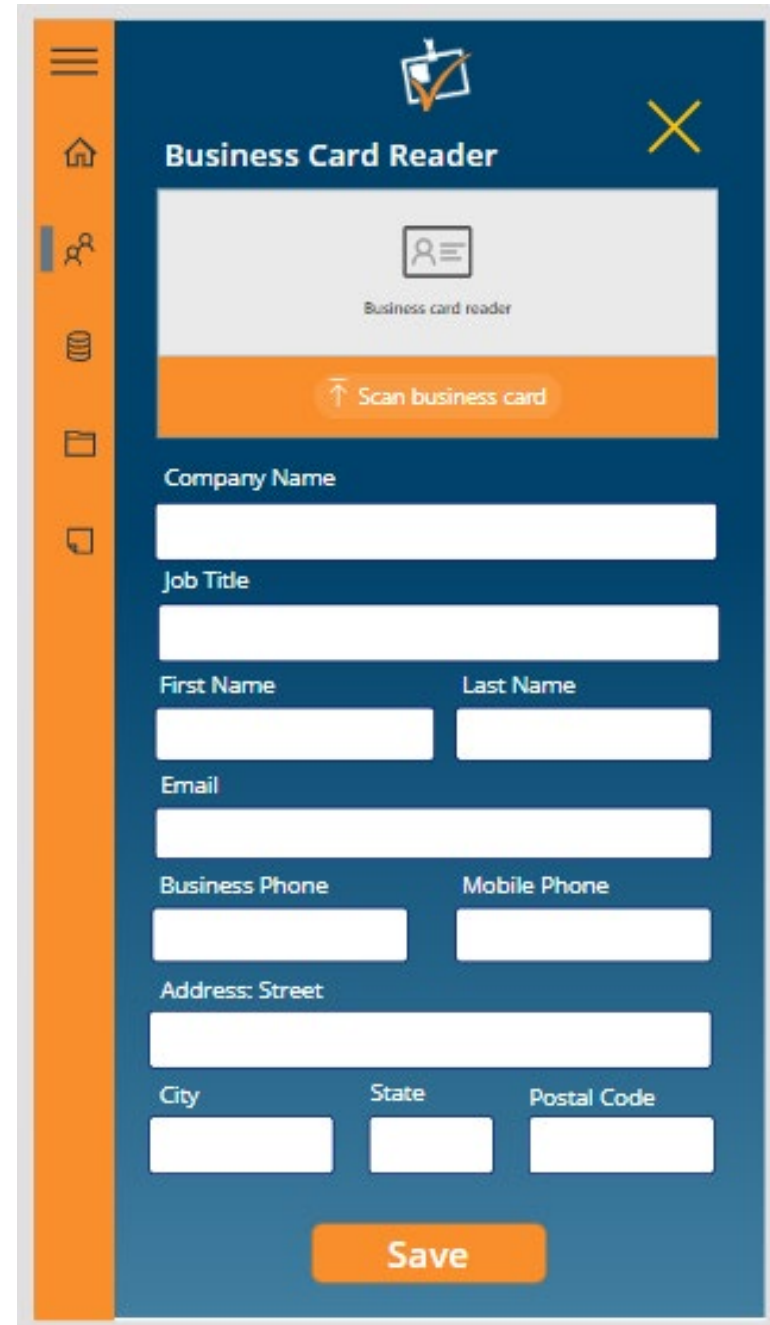
# Power Apps + Power Automate

How it works



# How it Works

- ✓ Create a Flow
- ✓ Create a Power App
- ✓ Add a form & button within the Power App
- ✓ Add the Power Automate Connector



The screenshot shows a mobile application interface with a dark blue background and an orange sidebar on the left. The sidebar contains icons for a menu, home, search, list, and document. The main content area is titled "Business Card Reader" and features a "Scan business card" button with an upward arrow icon. Below the button is a form with the following fields: "Company Name" (single line), "Job Title" (single line), "First Name" and "Last Name" (two columns), "Email" (single line), "Business Phone" and "Mobile Phone" (two columns), "Address: Street" (single line), "City", "State", and "Postal Code" (three columns). A large orange "Save" button is positioned at the bottom center of the form.



# Key Takeaways

- ✓ The Power Platform can be used independently or together to create powerful solutions
- ✓ Data Sources and Connectors
  
- ✓ Power Apps = Act
- ✓ Power BI = Analyze
- ✓ Power Automate = Automate

# Licensing

Power Platform



# Power Apps Licensing

## Subscription plans

Best for businesses that want predictable user-based licensing – with the flexibility to license users to run one app at a time or run unlimited apps.

### Per app plan

**\$5**

per user/app/month

Run one app or portal per user, stacking licenses for access to each additional as their needs change.

### Per user plan

**\$20**

per user/month

Run unlimited apps and portals per user for one flat monthly rate.

## Pay-as-you-go plan

Best for businesses that want the agility to pay only when a user runs an app during a monthly period.

### Per app plan

**\$10**

per active user/app/month<sup>2</sup>

Use an Azure subscription to pay per user based on the number of unique apps or portals a user runs each month.

# Power Automate Licensing

## License by user

### Per user plan

**\$15**

per user/month

Allow individual users to analyze their processes and create unlimited cloud flows based on their unique needs.

- Available to buy now with a credit card.

## License by user

### Per user plan with attended RPA

**\$40**

per user/month

Allow individual users to analyze their processes and create unlimited cloud flows, plus automate legacy applications through [robotic process automation \(RPA\)](#) and AI.

- Includes 5,000 [AI Builder](#) service credits per month.
- Available to buy now with a credit card.

## License by flow

### Per flow plan

**\$100**

per flow/month; minimum 5 flows<sup>2</sup>

Implement cloud flows with reserved capacity for unlimited users across your organization.

- Requires access to the Microsoft 365 admin center with [global administrator or billing administrator roles](#).

# Power BI Licensing

## Power BI Pro

Per user

**\$9.99**

Per user/month

License individual users with modern, self-service analytics to visualize data with live dashboards and reports, and share insights across your organization.

- Power BI Pro is included in [Microsoft 365 E5](#).
- Available to buy now with a credit card.<sup>1</sup>

## Power BI Premium

Per user

**\$20**

Per user/month <sup>2</sup>

License individual users to accelerate access to insights with advanced AI, unlock self-service data prep for big data, and simplify data management and access at enterprise scale.

- Includes all the [features](#) available with Power BI Pro.
- Available to buy now with a credit card.<sup>1</sup>

Per capacity

from

**\$4,995**

Per capacity/month

License your organization with capacity to accelerate access to insights with advanced AI, unlock self-service data prep for big data, and simplify data management and access at enterprise scale—without per-user licenses for content consumers.

- Requires a Power BI Pro license for publishing content into Power BI Premium capacity.
- Enable [autoscale](#) with your Azure subscription to automatically scale Power BI Premium capacity.