



ACHIEVING OPERATIONAL MILESTONES: BARCODE HARDWARE FOR THE WAREHOUSE

**JOHN REWCASTLE
DAVID DEARDORFF
MAY 5, 2022**



JOHN REWCASTLE, PRESIDENT

- Co-Founder
- Owner, Rewcastle Computer Systems
- Computer Programmer
- Chattanooga Native
- Avid Snowboarder



DAVID DEARDORFF, SALES ENGINEER

- 12 Years with Barcom
- Technology Sales Engineer for 28 Years
- Based in Atlanta, GA
- Enjoys sports and spending time with the grandson

ABOUT US

- In business since 1991
- Headquartered in Chattanooga, TN
- Automated solutions for industrial applications
- Specialization in transaction-based software
- Hardware services and support
- Custom programming

Since 1991



SERVICES & SOLUTIONS

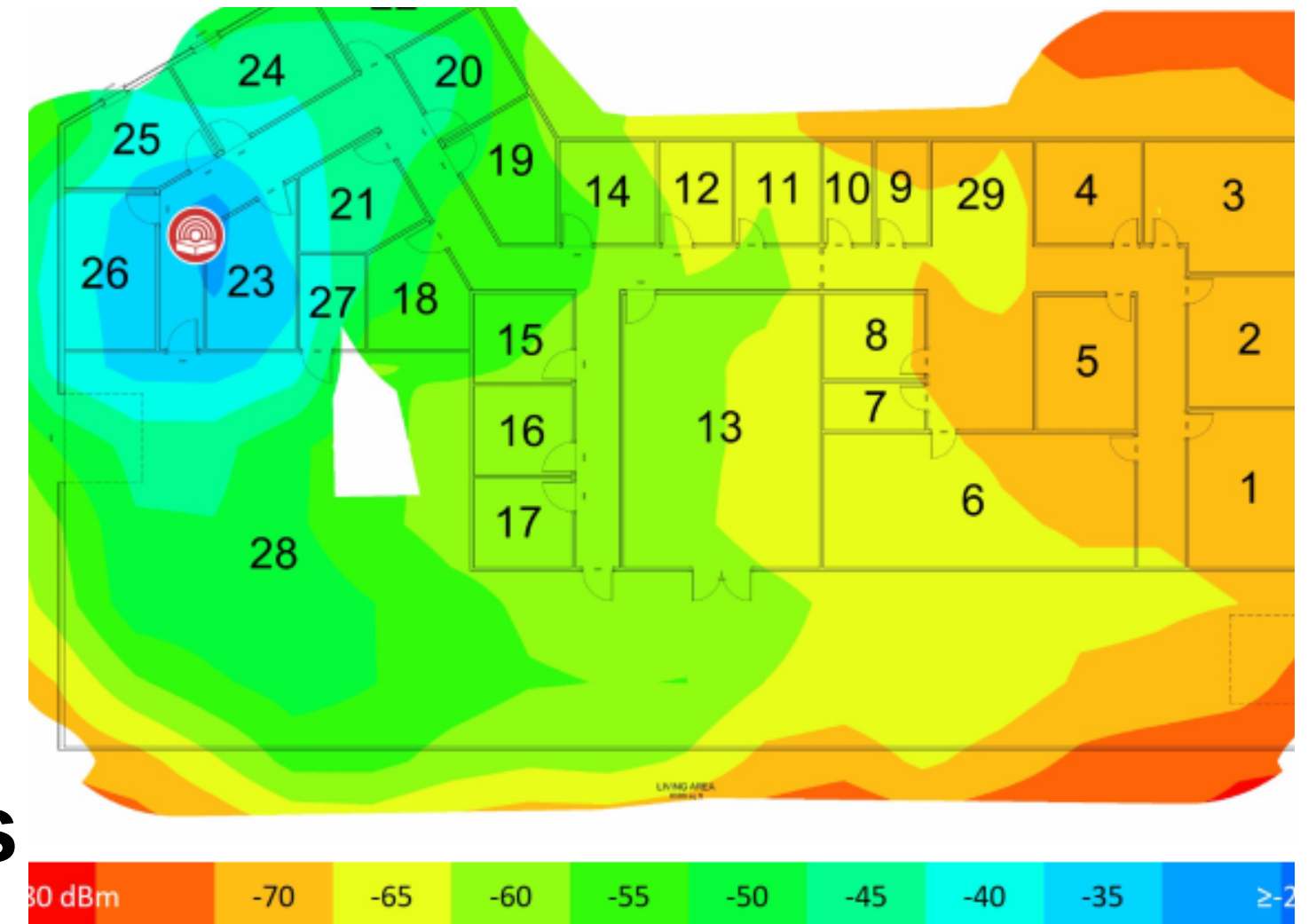
- Workflow Management
- Wireless Infrastructure
- RFID Solutions
- Inventory & Asset Tracking
- Bin Location Labeling
- Mobile Device Management
- Custom Programming



We help you evaluate your operational processes and develop an automated solution that aligns with your unique processes.

WIRELESS INFRASTRUCTURE

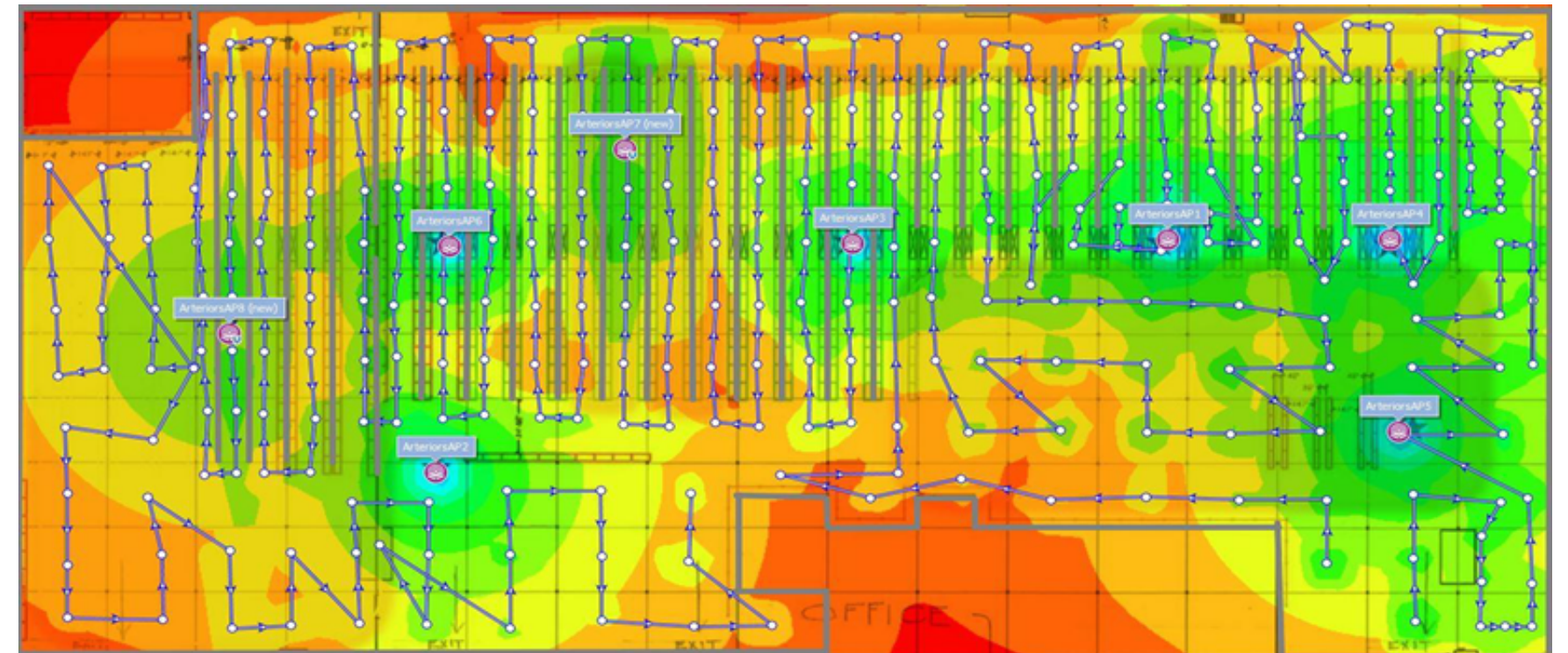
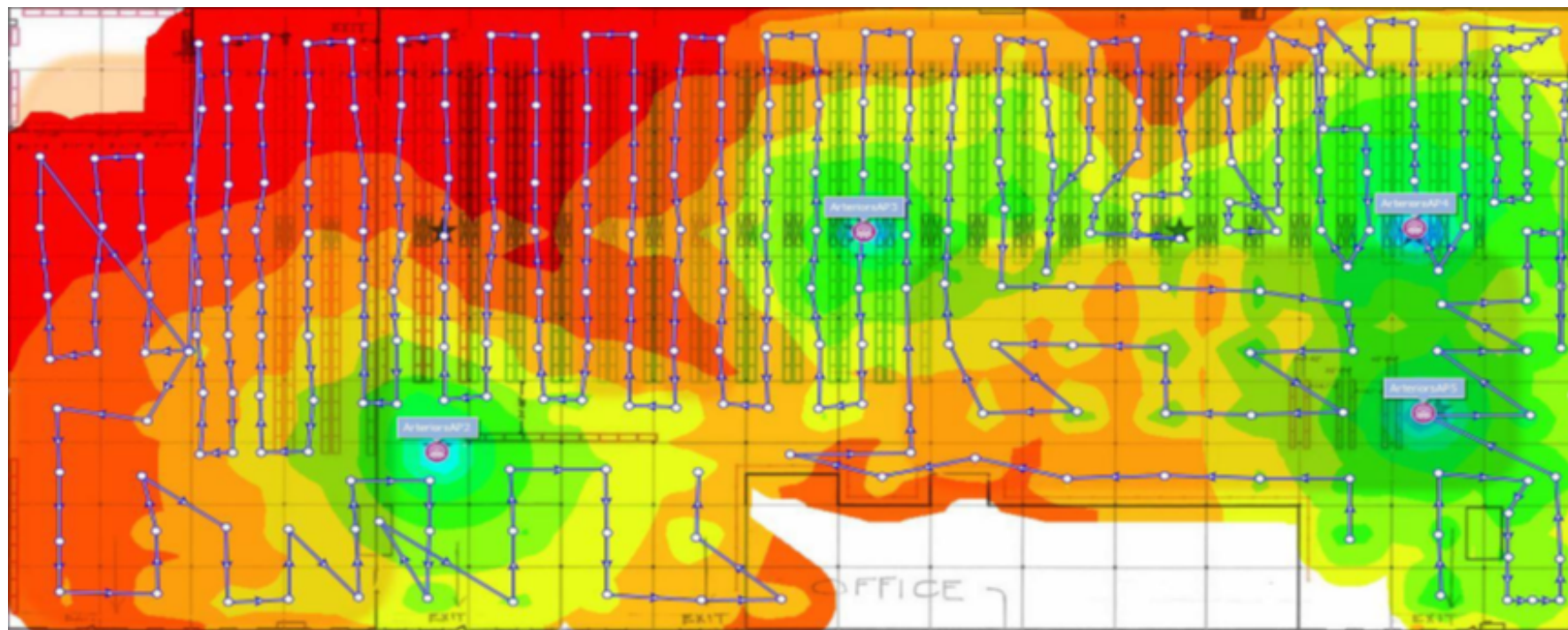
- Expert Advice on Wireless Design
- On-Site Wireless Surveys
- Secure your Network & Data
- Create Performance Consistency
- Select Hardware to Meet Your Needs



Signal strength is a key factor in WLAN performance. Without a strong signal, a high throughput link is impossible to establish.

WIRELESS SITE SURVEY & PLANNING

BEFORE: INCONSISTENT PERFORMANCE

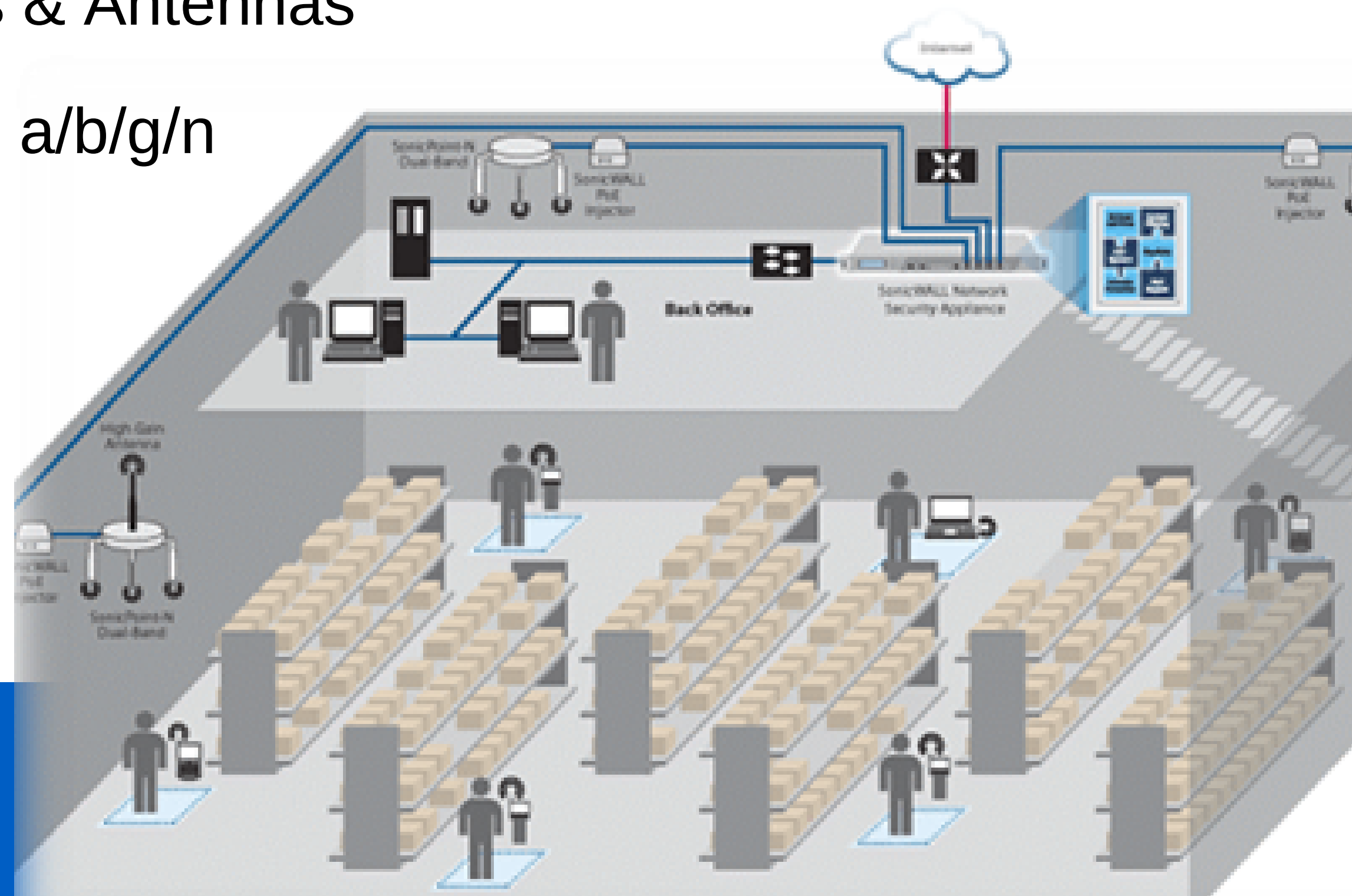


AFTER: RELIABLE CONNECTIVITY

A site survey helps you evaluate gaps and create a more streamlined environment.

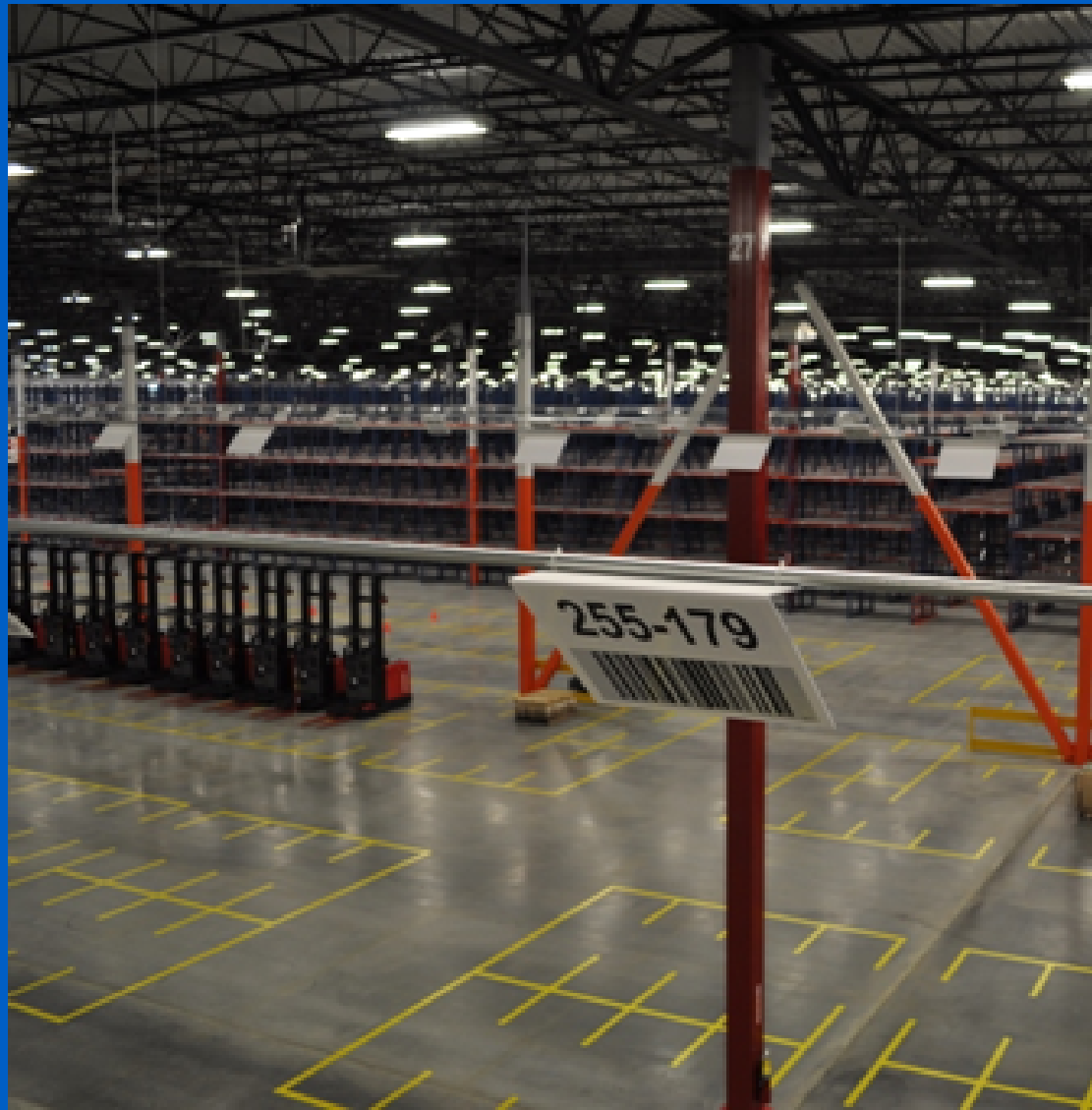
CONSISTENTLY CONNECTED

- Placement of Access Points & Antennas
- Correct Utilization of 802.11 a/b/g/n
- Proper Signal Strength
- User Training
- Best Practices



BIN LOCATION LABELING

IMPROVES MANAGEMENT OF INVENTORY, REGARDLESS OF SIZE OF THE WAREHOUSE SPACE



- Floor Labeling
- Rack/Shelf Labeling

- Overhead Location Labeling
- Bin Location Labeling



HARDWARE SOLUTIONS

- Mobile Computers
- Barcode Scanners
- Barcode Label Printers
- RFID / RTLS
- Shipping Scales
- Auto-Dimensioners

**TECHNOLOGY DESIGNED TO SPEED
TRANSACTION TIMES & REDUCE ERRORS**

MOBILE COMPUTERS



Handheld



Wearable



All-Touch

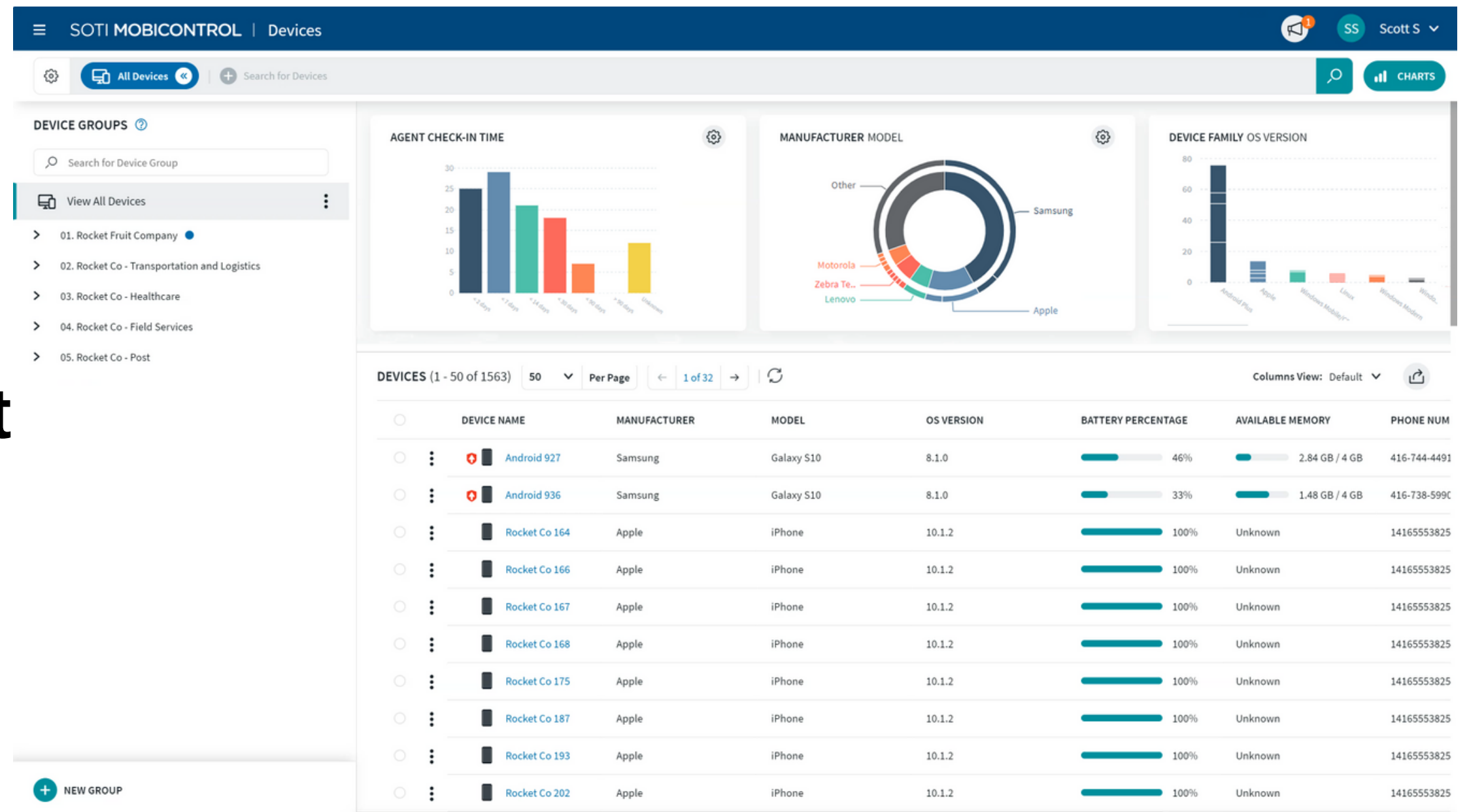


Vehicle-Mount

Environment, drop specs, IP rating, image/signature capture and durability are factors to consider when choosing a device.

MOBILE DEVICE MANAGEMENT

- Develop & Deploy Apps Remotely
- Install Updates Quickly
- Diagnose & Troubleshoot Issues More Easily
- Intuitive Operation
- Time & Money Savings



BARCODE SCANNERS

**General
Purpose/Retail
Handhelds**



**General
Purpose/Retail
Handsfree**



**Industrial
Handhelds**



**Industrial
Wearables**



**Healthcare
Handhelds**



Leading manufacturers like Honeywell and Zebra offer the greatest reliability, design and performance.

WHICH SCANNER WORKS BEST?

Handheld	Handsfree	Wearable
Bluetooth or Corded USB	Image Capture	Hands-Free Operation for User Safety
Industrial Grade Withstands Drops to Concrete, and Dust & Water Sprays	Scanning Barcodes on a Smartphone, Coupon or ID Card	Touchscreen or Keypad?
Disinfectant-Ready Option	Ideal for Commercial Environments	WiFi Enabled

With so many options on the market, it's best to consult with a solution provider who understands your specific requirements.



BARCODE PRINTERS

DIRECT THERMAL AND THERMAL TRANSFER PRINTERS

- Desktop Units
- Mobile Printers
- Industrial Printers
- RFID Printers
- Built-In Barcode Verifiers





DIRECT THERMAL VS. THERMAL TRANSFER PRINT TECHNOLOGY

DIRECT THERMAL	THERMAL TRANSFER
Simple Operation, Outstanding Print Quality	Impervious to Heat and Moisture; Image Cannot be Rubbed Off
No Ink, Ribbon or Toner Needed	Consistent, Reliable Printing; Unmatched Print Quality
Exposure to Heat & Light Limits Life of Print on Label	Higher Supplies Cost; Ribbon & Media Substrate MUST be Compatible

LABELS & RIBBONS

- Choose Genuine Supplies to Reduce Chance of Printhead Failure & Unreadable Barcodes
- Hundreds of Different Types of Labels; Understand What Your Application Requires
- Paper, Synthetic, Washable, Weatherproof, Colors, and More!
- Wax, Resin, and Wax/Resin Ribbon Formulations for Thermal Transfer Printers





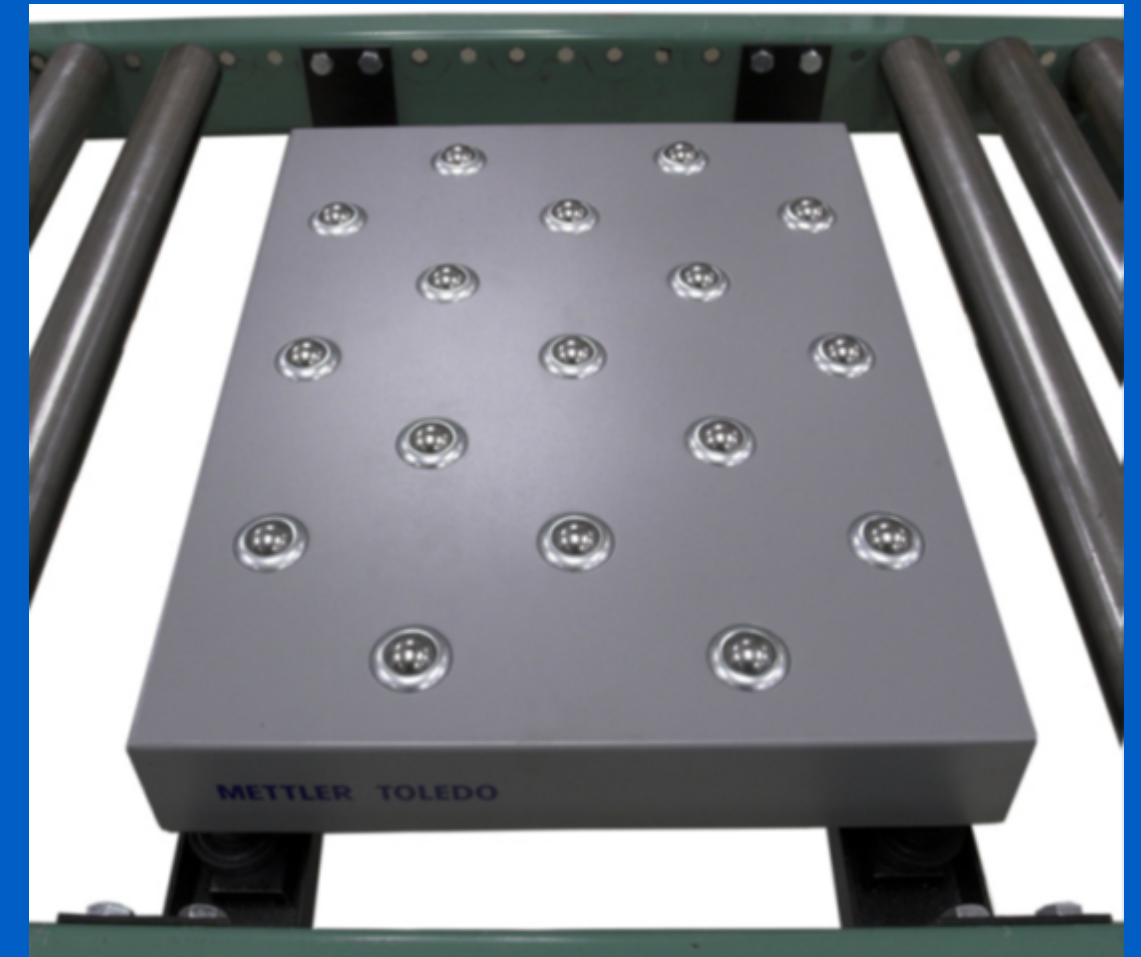
RFID TECHNOLOGY

ACHIEVE MAXIMUM VISIBILITY INTO INVENTORY & ASSETS

- Quickly and accurately track all assets
- Pinpoint location of all assets, even those on the move
- Greater visibility means increased worker productivity
- Ideal for large asset inventory, individual products, or batches
- Fixed, handheld and portable solutions

SHIPPING SCALES

ENGINEERED FOR DURABILITY

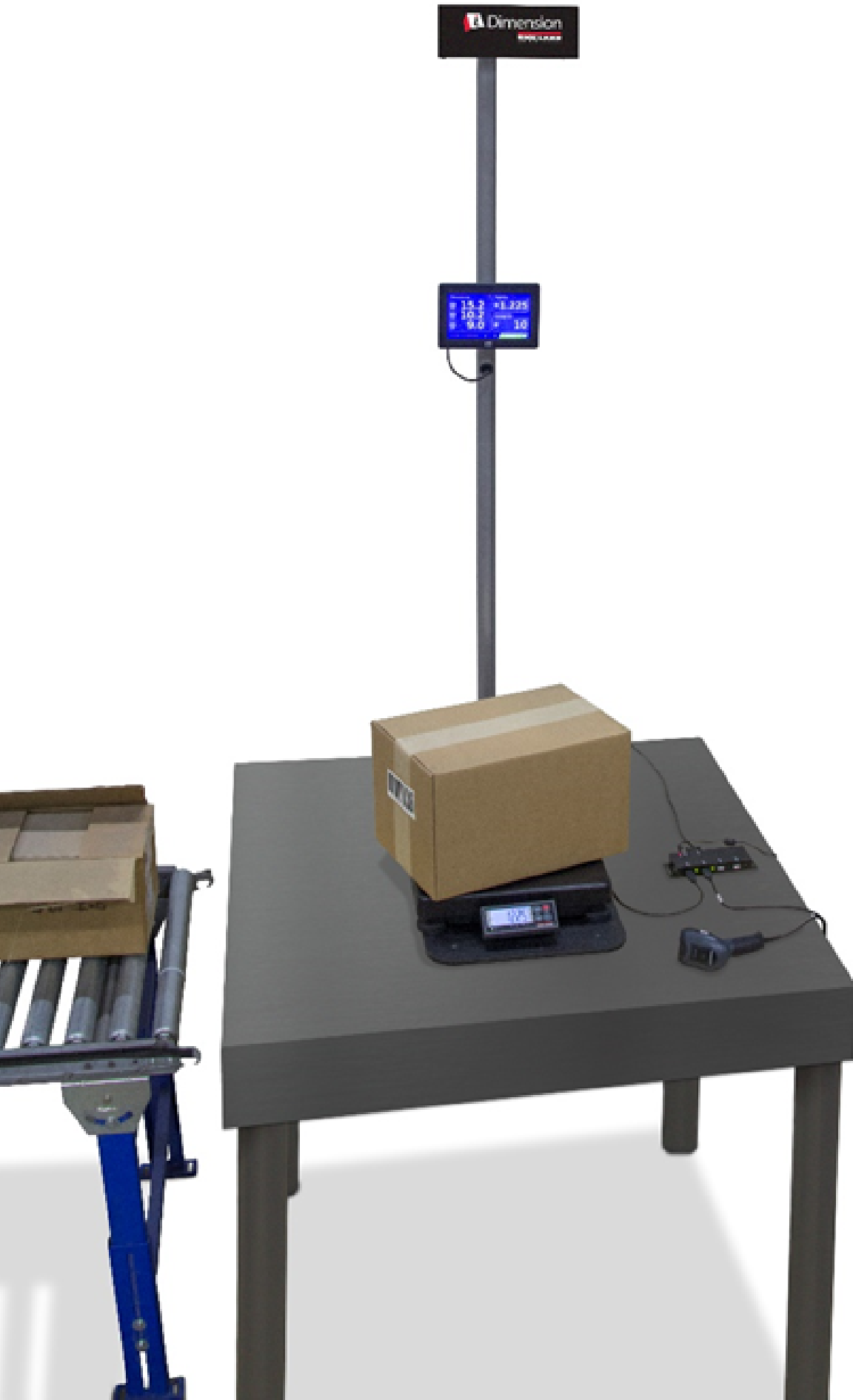


- Designed for Tough Environments
- Ideal for Heavy Packages
- Bluetooth Option Available

AUTO-DIMENSIONERS

ACCURATELY CAPTURE DIMENSIONS OF PACKAGES FOR PRECISE SHIPPING COSTS

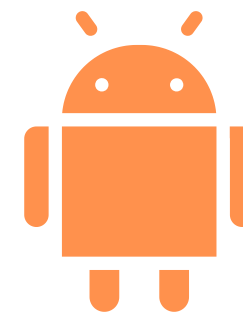
- Provides dimensions & weight of pallets and packages in less than 1 second
- Reduces risk of additional fees from carriers
- Install over a conveyor, table or scale
- Mount from a pole, ceiling mount or support beam
- Fully integrates with E-Ship



INDUSTRY TRENDS



RFID Technology for Streamlined Workflows



Windows® vs. Android™ Operating Systems



Housing Designed to Resist Common Disinfectants



Flexible-Range Scanning to Reduce Equipment Handling

DISINFECTANT-READY HOUSING

**Durable construction
resists harmful effects of
harsh chemicals**

**Controls spread of germs
on handheld devices**

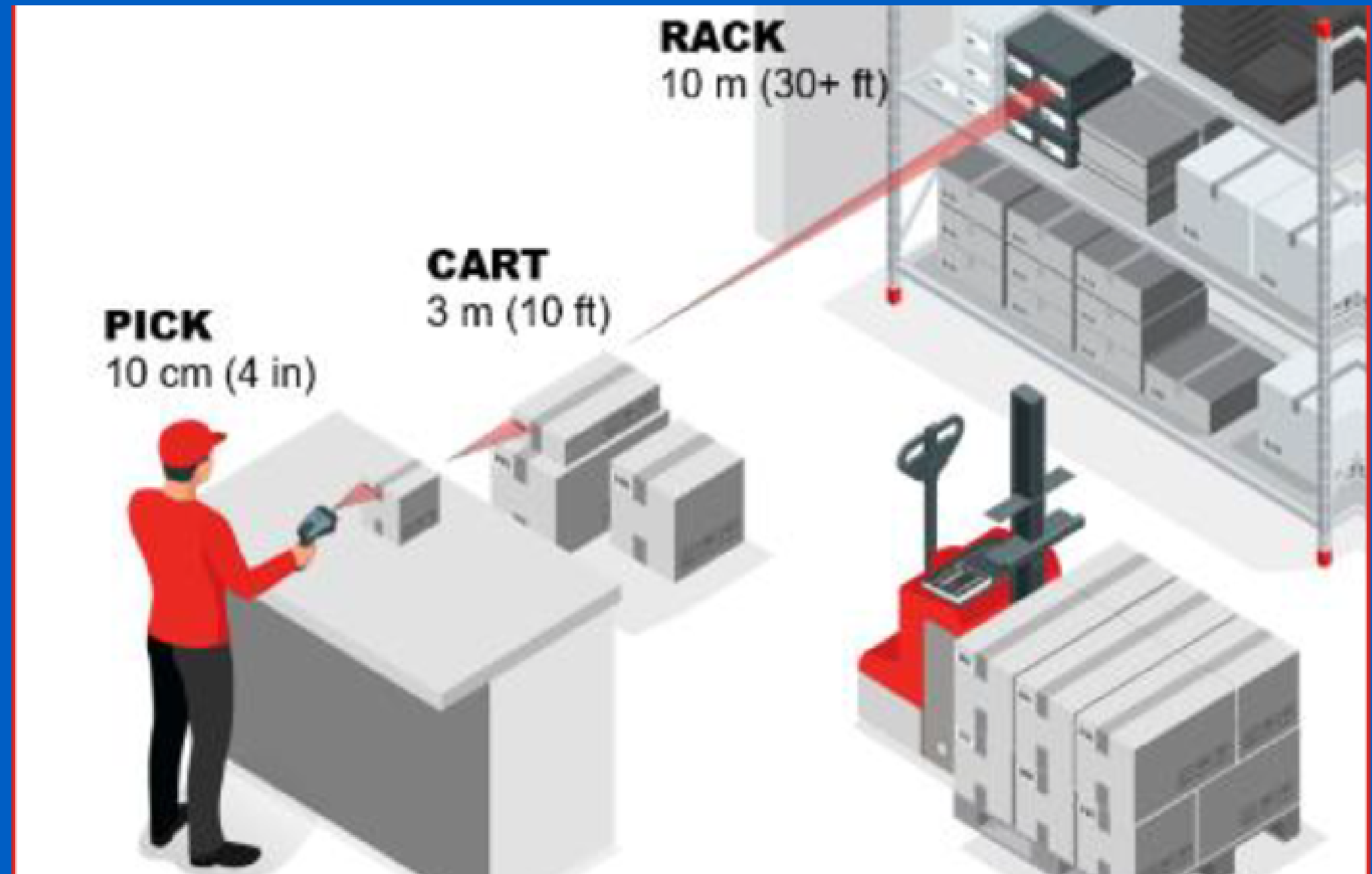
**Material used helps prevent
chemicals from causing it to
dry out, crack and get brittle.**

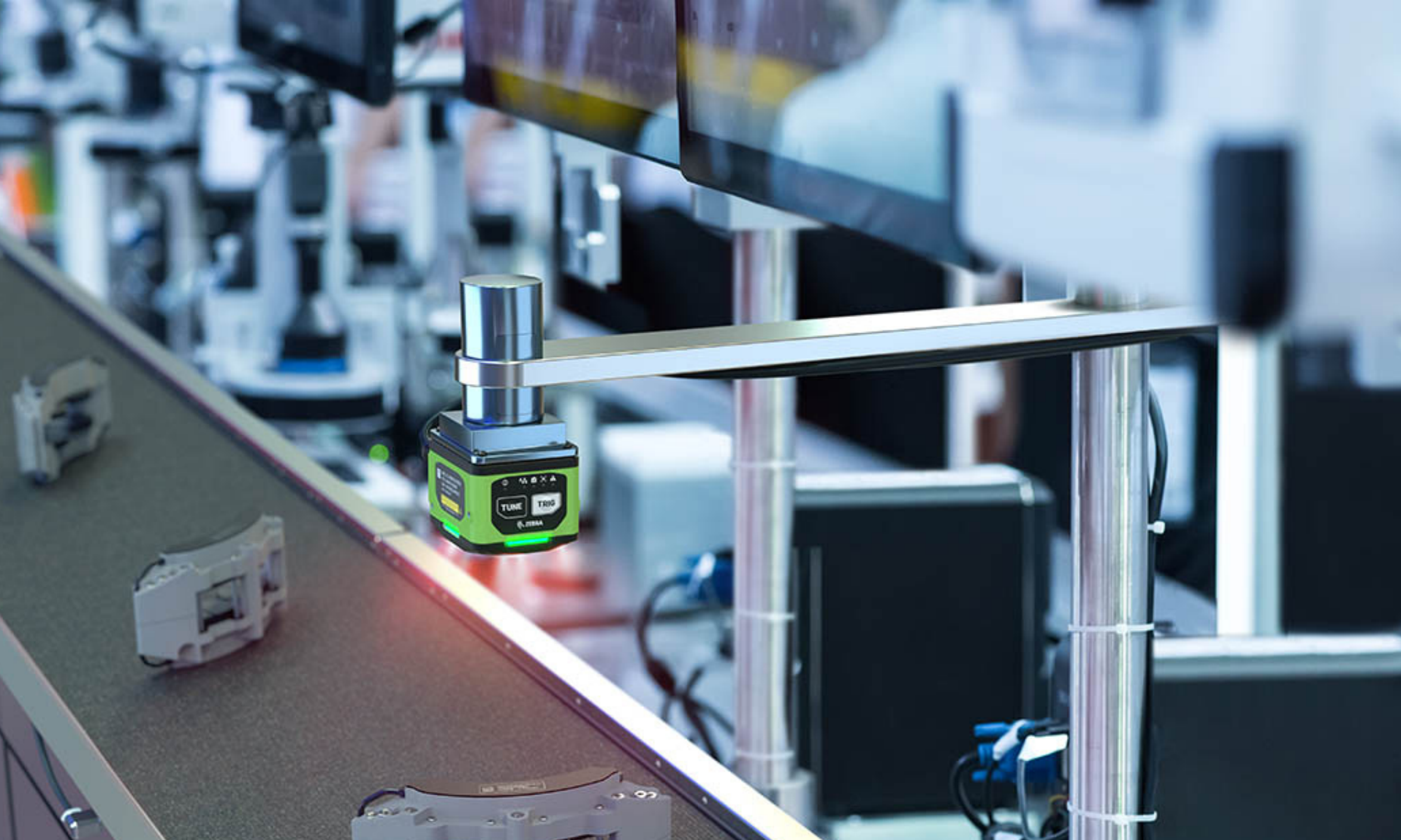




FLEXIBLE-RANGE SCANNING

SCANNING ITEMS CLOSE UP OR ON SHELVES AS HIGH AS 30' OFTEN REQUIRE MULTIPLE DEVICES TO CAPTURE THE BARCODES. FLEXIBLE-RANGE SCANNING DEVICES SOLVE THE MULTIPLE DEVICE DILEMMA.





**MACHINE VISION
& INSPECTION**

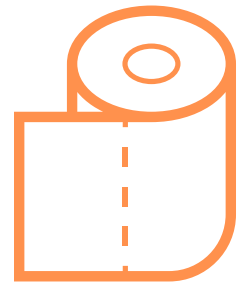
**FIXED-MOUNT
SCANNING**

RFID

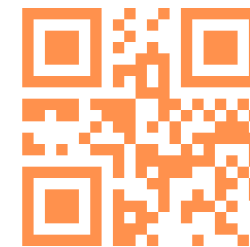
**DPM (DIRECT
PART MARKING)**

**OTHER WORKFLOW
SOLUTIONS**

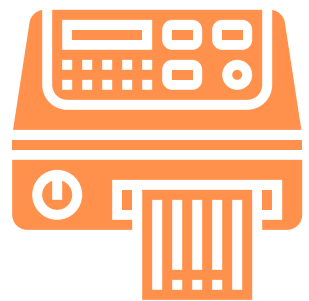
SUPPLY CHAIN



Supplies Media & Spares



Handheld Scanners



Industrial Printers & Printheads



Canadian Shipments



THANK YOU!

JOHN REWCASTLE

jrewcastle@barcominc.com

DAVID DEARDORFF

ddeardorff@barcominc.com

PHONE NUMBER

423-855-1822